

Light Up
Your
Sound

UberLight™ Frame

7100TL/7200TL

Instruction Manual

Reliable. Getting it Right. For You.

At Reliable, we do what we love, and we take pride in doing it right. With the UberLight™ Frame, you can expect an obsession for excellence. With its vertical adjustment range, antiglare and touchscreen technology, as well as it's sleek design, we offer both the function you want and the beauty you deserve—to frame what you see on your terms. Because at Reliable, we get it right. For you.



Table of Contents

01	Important Safety Instructions	05
02	Features	07
03	About the Universal Power Plug	09
04	Installing the Universal Power Plug	11
05	Installation Method	13
06	Using the Light	15
07	Using the Remote	17
08	Charging the Remote	18
09	Cleaning	19
10	Warranty	20



Important Safety Instructions

Read all instructions before use.

Save these instructions in a safe place for future reference.

When using your UberLight™ Frame, basic safety precautions should always be followed. Please read the following instructions carefully as they provide important information concerning how to install, use and care for this product.

Technical Data

Voltage: 120V/220V ~ 50/60Hz

Working Power: 2W - 6W

Certification:



Features

360° swivel



3 color temperatures



6 individual touch zones



Power button



30° tilt adjustment



Rechargeable remote



Durable cast iron construction



Specifications

- 6' USB Type-C Cord
- Lumens Up to 600
- CRI 90+
- Color Temperature Warm, Daylight, and Ultra Bright
- Clamp Opening 60mm
- Up to 50,000 hours lifespan.
- Operates at less than 20dB for ultra-quiet performance

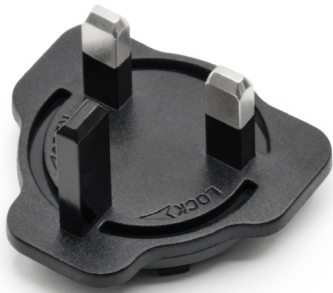
About the Universal Power Plug

Designed to support multiple plug types, making it a **universal power plug**



Type A plug attachment

Type G



UK, Ireland, Hong Kong, Singapore

Type A



USA, Canada, Mexico, Japan

Universal Adapter



Type I



Australia, New Zealand, China

Type C



Europe, South America, Asia

Installing the Universal Power Plug

The universal power plug (100–240 volt and 50–60 Hz) is adaptable for over **150 countries**.

Insert the UberLight™ Frame's USB-C cord into the right plug. Once connected, plug the adapter into the power outlet to turn the light on.

Plug Assembly and Removal



Align

Align the plate with the adapter, ensuring the grooves match.



Twist

Twist the plate clockwise until you hear a clicking sound.



Push

Press the push button on the the adapter and twist counterclockwise to detach it.

Installation Method

Select the best mounting option for your space: **Clamp**, **Base**, or **Table Mount**. Follow the appropriate instructions below for each method.

Clamp

1. Select the surface you wish to place the light on.
2. Rotate the large round knob counterclockwise so its wide enough to fit the surface.
3. Place the loosened clamp on the surface.
4. Rotate the large round knob clockwise to tighten the clamp around the surface.
5. Align the base of the light with the metal rod of the clamp to securely mount the light.

Base

1. Attach the base to the bottom of the light.
2. Place the base on a flat surface.

Table Mount

1. Choose a flat, stable surface to mount the light.
2. Use a #6 flathead or countersunk screw to securely attach the bracket to the surface.
3. Tighten the screws to ensure the light is firmly mounted and stable.

Using the Light

Power On



Press the **power button** on the light or remote.

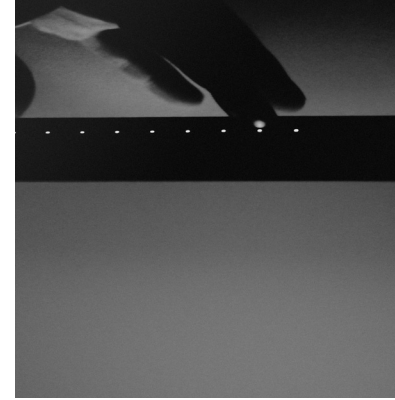
Note: Press the power button for **one second** to turn it on and **two seconds** to turn it off.

Set Light Temperature



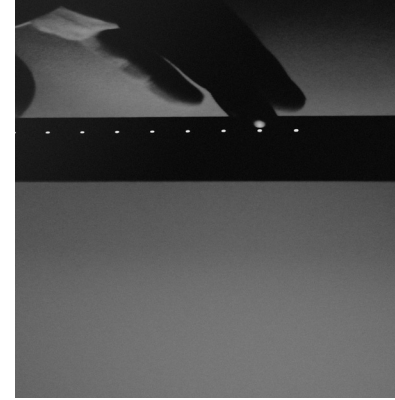
Choose from three light temperature options: **Warm Light**, **Daylight** and **Ultra Bright**.

Set Brightness Level



Select from **six** different brightness levels to customize the light intensity for your environment.

Set Touch Light Zones



The light has **six** individual touch zones that can be activated or deactivated for targeted lighting. Adjust zones to illuminate specific areas of your workspace.

Flashlight



The light also comes with a rechargeable remote with an integrated LED flashlight. Press the button to activate the flashlight located on top of the remote.

Combine Light Temperature, Brightness, and Touch Zones to create over 100 personalized lighting settings. [Find the perfect light, for you.](#)

Using the Remote

Seamlessly customize your light with a convenient remote control, ensuring the perfect ambience for every moment.




Charging the Remote

A light turns on when the remote is charging and turns off once it's fully charged



Conveniently located for quick retrieval and storage

Charging has never been easier with this innovative built-in dock, designed for seamless storage and effortless charging.



Cleaning

1. Disconnect the appliance from the main power source and allow it to cool before undertaking any cleaning task.
2. Clean the equipment with a damp cloth, then allow to dry.
3. Do not use solvents or products with an acidic or base pH such as bleach, or abrasive products, for cleaning the appliance. Never submerge the appliance in water or any other liquid, or place it under running water.

Reliable Corporation (“Reliable”) warrants to original purchaser of its products that every product sold by Reliable (a “Reliable Product”) is free from defects in material and workmanship for a period of one year from the date of purchase, if properly used and maintained. Subject to the conditions and limitations set forth below, Reliable will either repair or replace any part of a Reliable product that proves defective by reason of improper workmanship or materials. If the defective Reliable product is no longer available and cannot be repaired effectively or replaced with an identical model, Reliable shall replace the defective Reliable product with a current Reliable product of equal or greater value. Repaired parts or replacement products will be provided by Reliable on an exchange basis, and will be either new or refurbished to be functionally equivalent to new. If Reliable is unable to repair or replace a Reliable product, it will refund the current value of that Reliable product at the time the warranty claim is made.

This limited warranty does not cover any damage to a Reliable product that results from improper installation, accident, abuse, misuse, natural disaster, insufficient or excessive electrical supply, abnormal mechanical or environmental conditions, wear and tear resulting from normal use of the product, or any unauthorized disassembly, repair, or modification. This limited warranty does not extend to any indirect, consequential or incidental damages that may be suffered by a user or from the use of a Reliable product, including without limitation, any liability for third party claims for damage, and is limited to the amount paid by the original purchaser Reliable product with respect to which this limited warranty protection applies. This limited warranty does not apply with respect to products that have been altered or which are missing serial numbers or for products not purchased directly from Reliable or a dealer authorized by us to sell Reliable products.

This limited warranty is the only warranty that applies to any Reliable product, supersedes any and all terms that may be contained in any other document or purchase order and may not be altered or amended except expressly in writing by Reliable.

To obtain a repair or replacement under the terms of this warranty, please contact our customer service group at 1-800-268-1649 or at support@reliablecorporation.com. You will be required to submit an original receipt via fax or e-mail. The receipt must reflect that you are the original purchaser, the product was bought directly from us or from an authorized Reliable dealer and that the warranty claim is being made within the warranty period. You will be issued a return authorization number (RA#) and asked to ship the defective product together with proof of purchase and RA#, prepaid insured to the following address:

Reliable Corporation, 5-100 Wingold Avenue, Toronto, ON M6B 4K7.

Freight collect shipments will be refused. The risk of loss or damage in transit will be borne by the customer. Once Reliable receives the defective product, it will initiate the repair or replacement process.

If you have any questions regarding this warranty, you may write to:

Reliable Corporation

100 Wingold Avenue, Unit 5

Toronto, Ontario

Canada M6B 4K7

www.reliablecorporation.com